



# **DX-CP26**

# **Bluetooth to 232/RJ45**

# **Wireless Adapter**

Version: 1.0

Date: 2023-08-19





## Update Records

Version	Date	illustrate	author
V1.0	2023/08/19	Initial version	SML
V1.1	2024/04/10	Update baud rate description	SML

## Contact Us

**Shenzhen Daxia Longque Technology Co., Ltd.**

Email: [waimao@szdx-smart.com](mailto:waimao@szdx-smart.com)

Tel: 0755-29978125

Web: [en.szdx-smart.com](http://en.szdx-smart.com)

Add: Room 601, Block A1, Huafeng Zhigu, Hangkong Road, Baoan District, Shenzhen



## Contents

<b>1. Introduction .....</b>	<b>4</b>
1.1. Overview .....	4
<b>2. Product Diagram .....</b>	<b>4</b>
<b>3. Hardware Construction Description .....</b>	<b>5</b>
3.1. KEY button .....	5
3.2. TX\RX\WORK\POWER Indicator .....	5
<b>4. Specification Parameters .....</b>	<b>6</b>
4.1. Bluetooth default parameters .....	6
4.1.1. Basic parameters .....	6
4.2. Hardware interface params .....	6
<b>5. Android APP Modify Module Parameters .....</b>	<b>7</b>
<b>6. Wireless communication between CP26 and Phone&amp; Computer .....</b>	<b>8</b>
6.1. Wireless communication between devices and mobile phones .....	8
6.2. How to use the device for wireless communication with a computer .....	9
<b>7. Method for using wireless communication between devices .....</b>	<b>10</b>
<b>8. Points for attention .....</b>	<b>11</b>
<b>9. Packing List .....</b>	<b>12</b>

## Picture index

Figure 1	CP26 Product diagram .....	4
Figure 2	CP26 Product size chart .....	5
Figure 3	DB19 Interface Definition .....	7
Figure 4	RJ45 Interface Definition .....	7
Figure 5	Android APP Modify Module Parameters .....	8
Figure 6	CP26 functional diagram .....	8
Figure 7	Android APP interface diagram .....	9
Figure 8	Apple APP interface diagram .....	9
Figure 9	Computer serial port software diagram .....	10
Figure 10	CP26 master-slave connection diagram .....	11



# 1. Introduction

## 1.1. Overview

DX-CP26 is a multi-function Bluetooth wireless adapter developed by Shenzhen Daxia Longque Technology Co. Ltd. It supports converting Bluetooth into 232、RJ45 dual interface serial device and replacing traditional cables. Multifunctional, flexible, and stable. Customers can connect to mobile phones, computers, devices, etc. according to their needs for data exchange.

# 2. Product Diagram

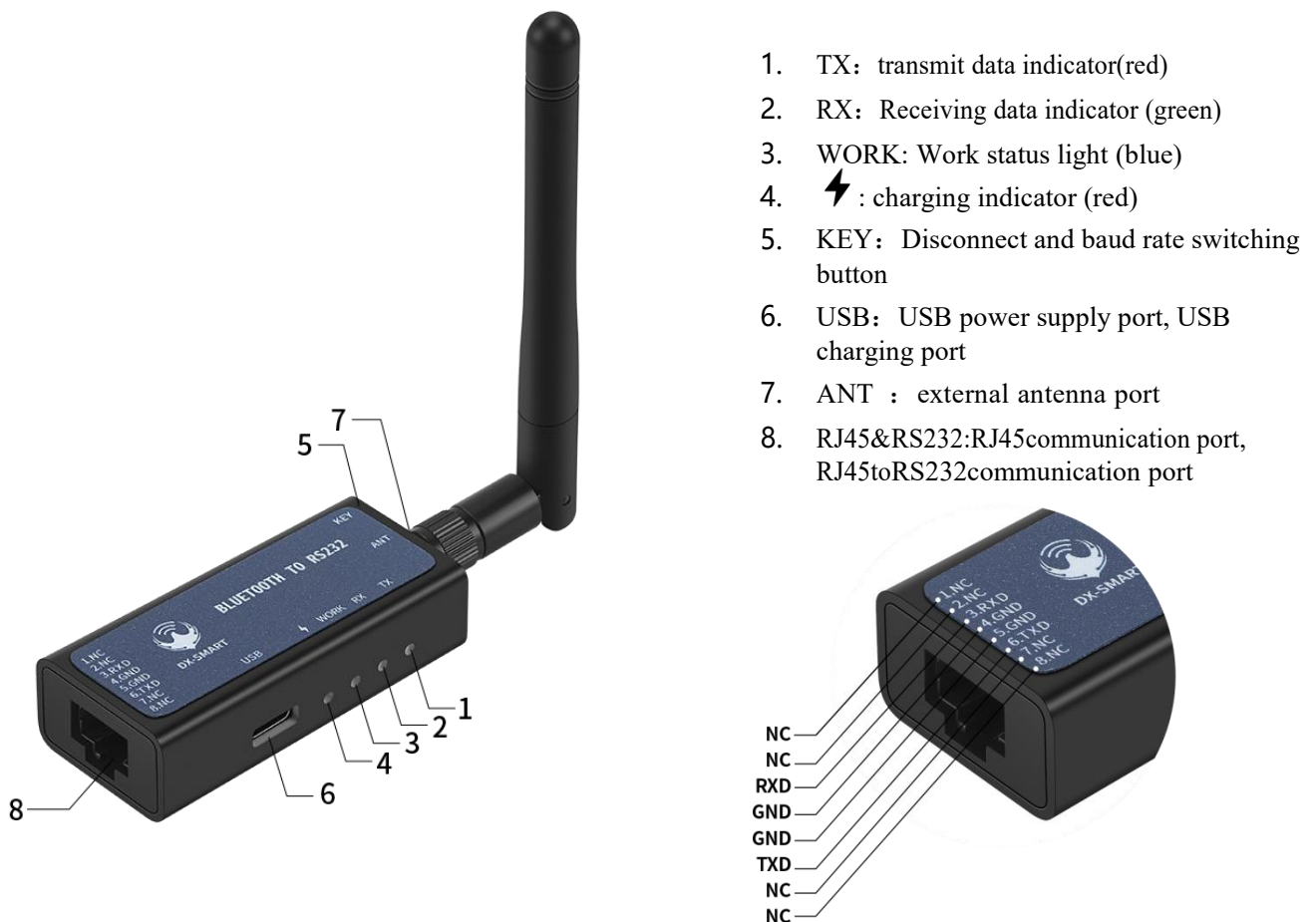


Figure 1 CP26 Product diagram

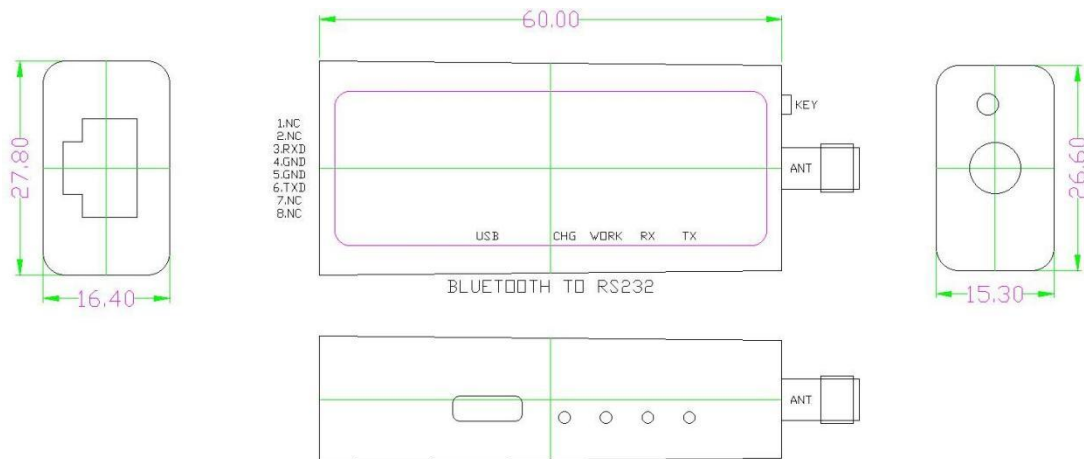


Figure 2 CP26 Product size chart

## 3. Hardware Construction Description

### 3.1. KEY button

- **KEY button function:**

Bluetooth connected state: short press once to disconnect Bluetooth connection;

Bluetooth not connected state: short press twice in a row to switch baud rate.

- **Power on/off:**

Power on: long press for 1s;

Power off: long press for 3s.

- **Baud rate switching:**

Short press the KEY twice in a row to switch the baud rate once, the number of blue light flashes represents the baud rate number;

The blue light flashes once for a baud rate of 2400, twice for 4800, three times for 9600, four times for 19200, five times for 38400, six times for 57600, seven times for 115200 (factory default baud rate is 9600, blue light flashes 3 times)

### 3.2. TX\RX\WORK\POWER Indicator

- TX Data indicator: flashing when Bluetooth sends data.
- RX Data indicator: flashing when Bluetooth receives data
- ⚡POWER charging indicator light: When charging, the red light is on; when fully charged, the red light goes out.
- WORK Work status indicator:



- ✧ Bluetooth not connected status: blue light blinks, the number of times the blue light blinks represents the baud rate number. The number of times the blue light blinks represents the baud rate number. 2400 for one blink, 4800 for two, 9600 for three, 19200 for four, 38400 for five, 57600 for six, and 115200 for seven.
- ✧ Bluetooth connected status: blue light is on for a long time.

Work light	Phenomenon	Description
Blue light flashes	Number of flashes	Baud rate corresponding to the number of flashes
		One time: 2400
		Two times: 4800
		Three times: 9600
		Four times: 19200
		Five times: 38400
		Six times: 57600
		Seven times: 115200
		Factory default: Three times: 9600

## 4. Specification Parameters

### 4.1. Bluetooth default parameters

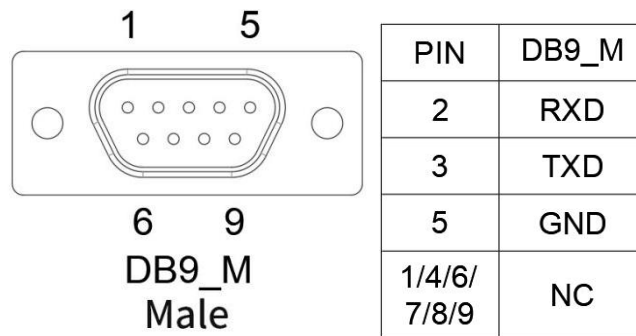
#### 4.1.1. Basic parameters

- Bluetooth name: RS232\485
- Module serial port default parameters: 9600bps/8/n/1 (baud rate/data bit/no parity/stop bit)
- Module BLE UUID: SERVICE UUID: FFE0  
NOTIFY/WRITE UUID FFE1  
WRITE UUID: FFE2

### 4.2. Hardware interface params

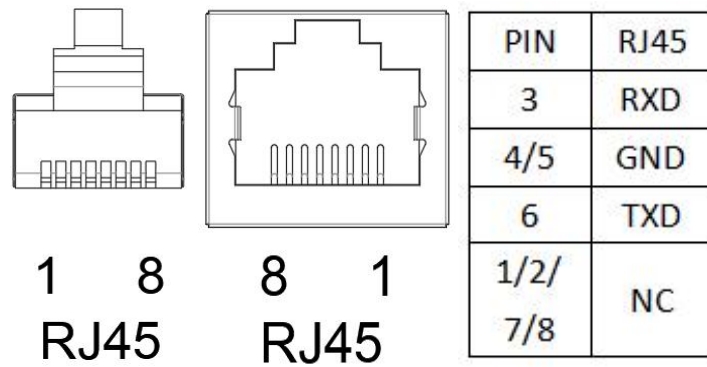
- RS232communication port: default 9600bps/8/n/1 (baud rate/data bit/no parity/stop bit), module supports software flow control. Support baud rates: 2400, 4800, 9600, 19200, 38400, 57600, 115200. The VCC power supply voltage range is 4.5V-6V.

The interface definition is shown in Figure 3:



**Figure 3 DB19 Interface Definition**

RJ45 port: default 9600bp suitable for switches/routers/firewalls/servers with RJ45 (8P8C) Console interface. The interface definition is shown in Figure 4:



**Figure 4 RJ45 Interface Definition**

## 5. Android APP Modify Module Parameters

**Video tutorial link:**<https://www.youtube.com/@DX-SMART>

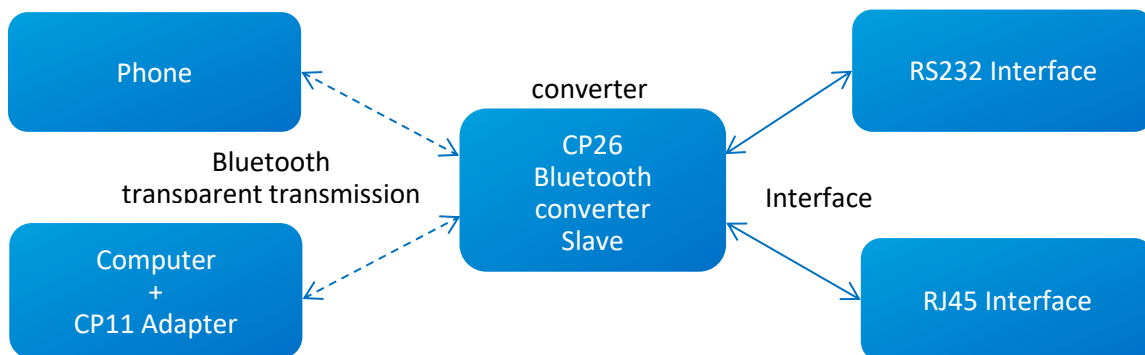
1. Connect CP26 to the device through the 232 /RJ45 interface;
2. Install the Android testing app in the data package onto the Android phone, open the transparent interface for searching and connecting (the Android app interface is shown in Figure 5);
3. After searching for the Bluetooth name, click on the name to connect;
4. Click "Query" to get the default parameters of the module;
5. Fill in the Bluetooth parameters that need to be modified, and then click "Set".



**Figure 5 Android APP Modify Module Parameters**

## 6. Wireless communication between CP26 and Phone& Computer

Wireless data communication between phone and computer is achieved through the CP26 Bluetooth wireless converter and 232/RJ45 interface, as shown in the following figure:



**Figure 6 CP26 functional diagram**

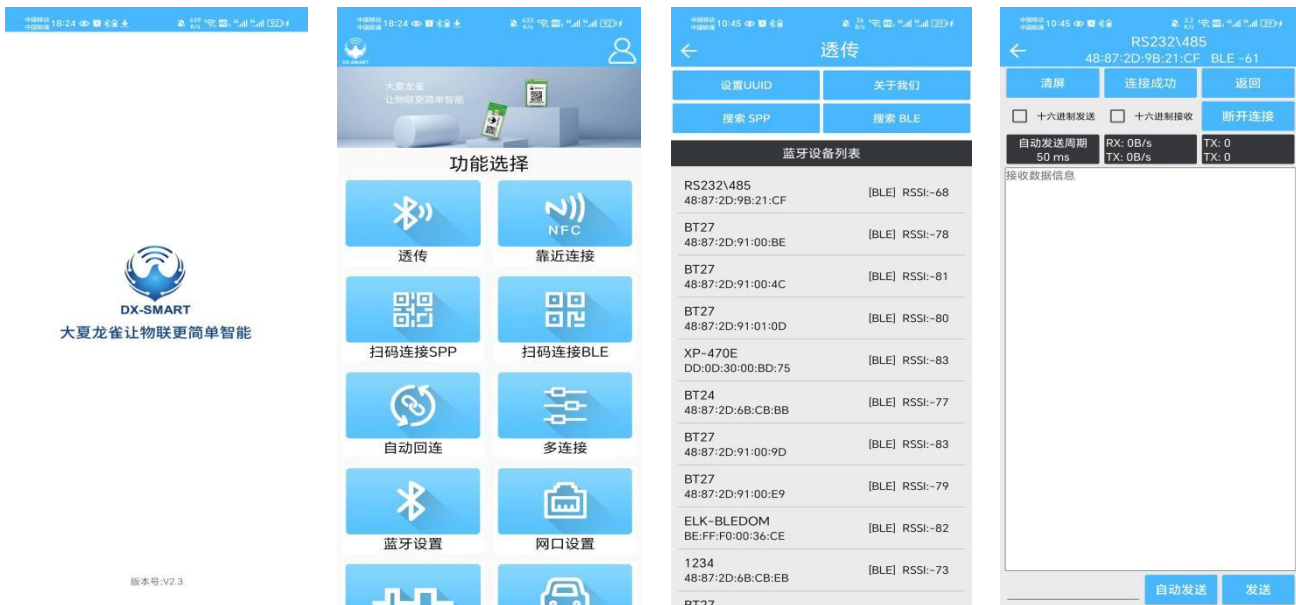
### 6.1. Wireless communication between devices and mobile phones

**Video tutorial link:**<https://www.youtube.com/@DX-SMART>

1. Connect the CP26 Bluetooth to 232/RJ45 Wireless Adapter to the device via one of the two 232/RJ45 ports;



2. Install the Android testing app in the data package onto the Android phone, open the transparent interface for searching and connecting (the Android app interface is shown in Figure 7); Download our company's "DX-SMART" app from the Apple Store and use it for data transmission testing (the Apple app interface is shown in Figure 8);
3. After searching for the Bluetooth name, click on the name to connect;
4. After connecting, data exchange can be carried out



**Figure 7 Android APP interface diagram**



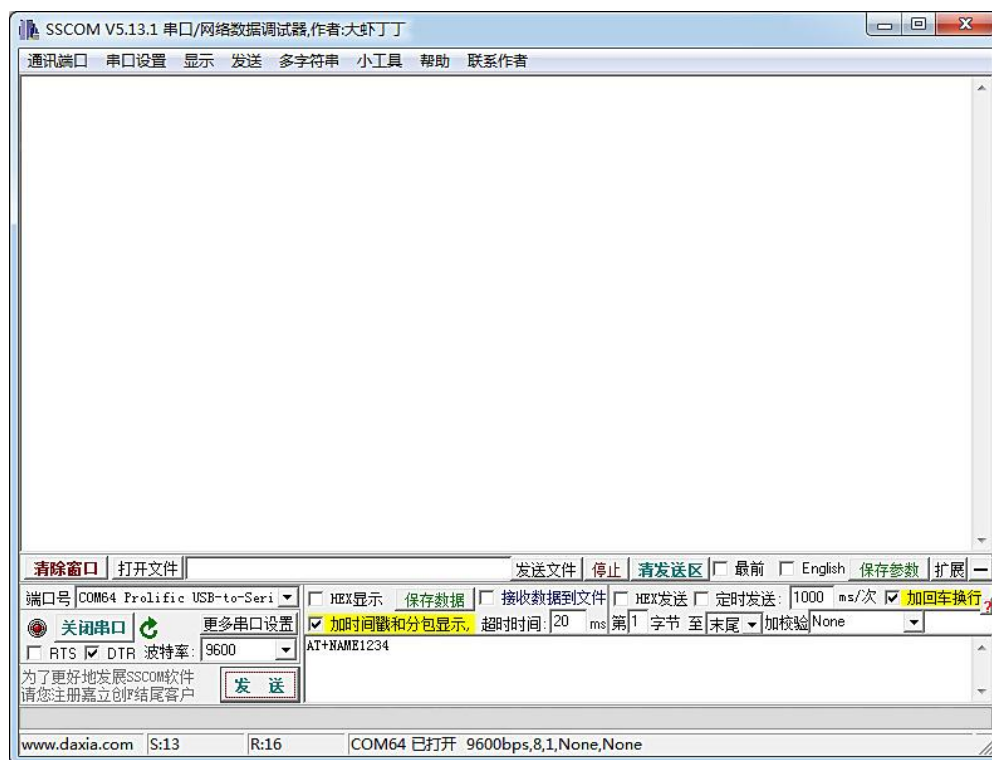
**Figure 8 Apple APP interface diagram**

## 6.2. How to use the device for wireless communication with a computer

**Video tutorial link:**<https://www.youtube.com/@DX-SMART>

The computer needs to be used with our CP11 Bluetooth adapter

1. Connect the CP26 Bluetooth to 232/RJ45 wireless adapter to the device through one of the 232/RJ45 interfaces ;
2. Install the "CH341" driver in the data package on the computer;
3. Insert the CP11 adapter into the computer;
4. Install the SSCOM5.13.1 computer serial port software. Open the serial port software and select the corresponding COM port for the CP11 adapter. Configure the serial port software with the default parameters, which are: 9600bps/8/n/1 (baud rate/data bits/no parity/stop bits);
5. The CP11 adapter will actively search for the CP26 Bluetooth adapter and connect to it;
6. Data interaction can be carried out after connection;



**Figure 9 Computer serial port software diagram**

## 7. Method for using wireless communication between devices

Wireless data communication between two devices can be achieved using the CP26 Bluetooth to 232/RJ45 wireless adapter, supporting both 232 and RJ45 interfaces. The interface combinations are shown in the following diagram:

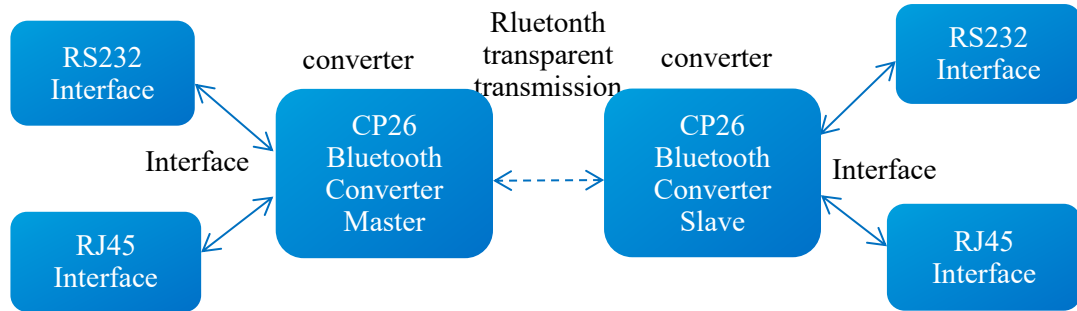


Figure 10 CP26 master-slave connection diagram

Video tutorial link:<https://www.youtube.com/@DX-SMART>

1. A CP26 Bluetooth to 232/ RJ45 wireless adapter master is connected to device 1 through one of the two 232/ RJ45 interfaces ;
2. A CP26 Bluetooth to 232/ RJ45 wireless adapter slave is connected to device 2 through one of the two 232/ RJ45 interfaces ;
3. After the CP26 master is turned on, it will actively search for the CP26 slave to connect to, realizing wireless data communication between the various interfaces of device 1 and device

## 8. Points for attention

- Avoid external pressure on the product
- Use in room temperature indoor and outdoor environments. Do not use in humid or watery environments.
- Non professionals are not allowed to disassemble and repair themselves

## 9. Packing List

● CP26 For Phone

✧ Product	×1
✧ Instruction manual	×1
✧ Glue stick antenna	×1
✧ USB charging cable	×1
✧ RJ45 adapter cable	×1
✧ RS232 adapter cable	×1

● CP26 For PC

✧ Product	×1
✧ Instruction manual	×1
✧ Glue stick antenna	×1
✧ USB charging cable	×1
✧ RJ45 adapter cable	×1
✧ RS232adapter cable	×1
✧ CP11 Master	×1

● CP26 For Device

✧ Product	×2
✧ Instruction manual	×1
✧ Glue stick antenna	×2
✧ USB charging cable	×2
✧ RJ45 adapter cable	×2
✧ RS232 adapter cable	×2